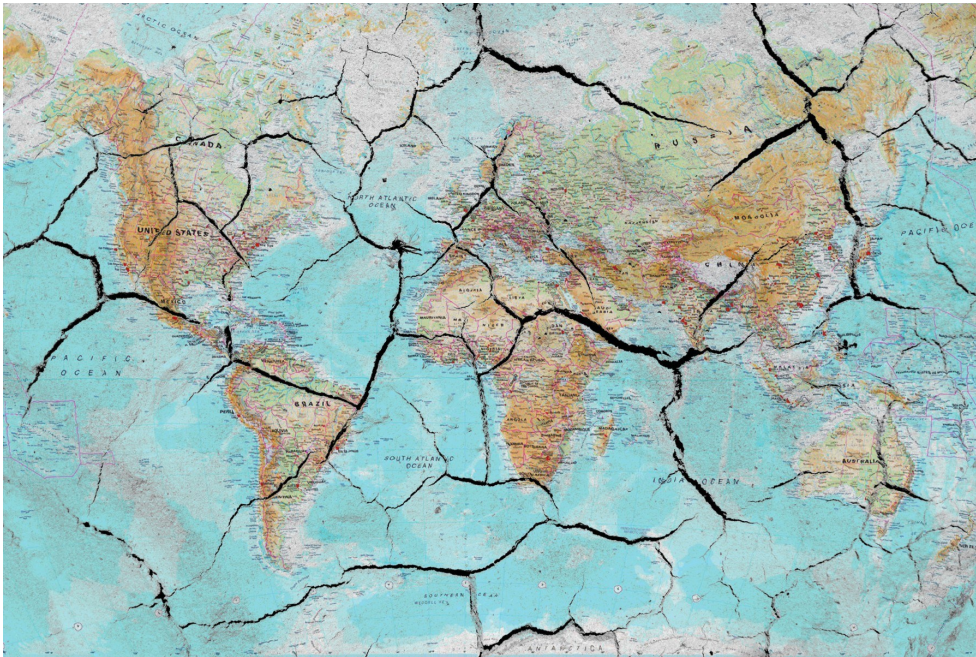


Climate change: Our hoteliers around the world are seeing and feeling the effects

Darmstadt, 22 August 2019

 Share  Tweet  Like 0



Green Pearls®

Dieburger Straße 203

64287 Darmstadt

Tel: +49 (0) 61 51 273 669 0

Email: press@greenpearls.com

www.greenpearls.com

PICTURE DOWNLOAD 

NEWSROOM

Share this release

Climate change: Our hoteliers around the world are seeing and feeling the effects

    share

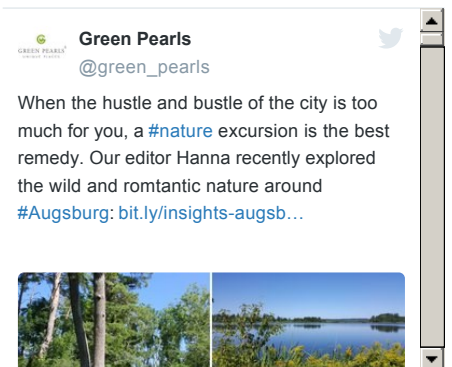
Climate change is the topic of our time and travelling is often the focus of attention. In recent years, many people around the world have, for the first time, felt personally affected by climate change. Studies confirm that some of the effects of climate change include increasing the instances of extreme weather conditions such as heat waves and droughts. We have asked our partner hotels around the world what changes they are experiencing in their region.

Endangered coral reefs on the Maldives

Small islands such as the Maldives are particularly susceptible to the damaging effects of climate change: rising sea levels and damage to coral reefs, which actually protect the atolls, pose serious threats. "The impact of climate change is particularly evident in our house reef, whose situation has deteriorated further due to the effects of El Niño," says Smrutica, Marine Biologist at [Reethi Faru Resort](#). "Coral bleaching now affects more than half of all of the corals. Every summer, as temperatures continue to rise, we are confronted with the effects on coral reefs. You can see how the rising water temperature causes them to die off: the normally brown-coloured, living corals gradually become lighter and eventually turn completely white."

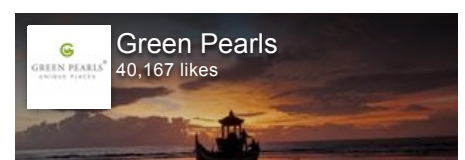
More and more guests are asking about the effects of climate change on the resort and the marine ecosystem, Smrutica adds: "I am very often asked about climate change and sustainability, especially since the last coral bleaching. For

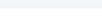
Tweets by [@green_pearls](#)



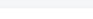
Embed

View on Twitter






Like Page




Book Now




GREEN PEARLS
HOTELS & RESORTS

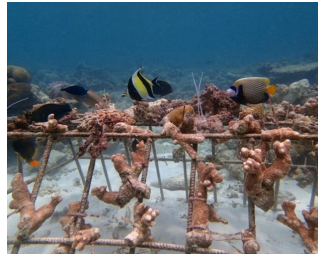
Green Pearls

7 hours ago



The **Inkterra La Casona** is located in the vibrant city Cusco, but you can still enjoy complete relaxation in the calm and serene surroundings. The hotel is your quiet oasis amidst the vibrant capital of the Incan empire with a panoramic view overlooking the city ❤️

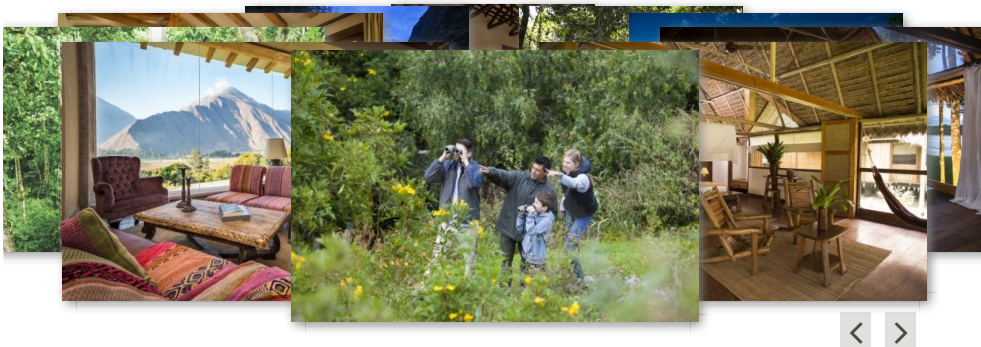




Around the [SCHWARZWALD PANORAMA](#) in [Bad Herrenalb](#), the hotel team has seen an increasing number of pests in recent years. Not only local pests, but also those which originate from warmer regions abroad. The plants are not only exposed to drought, but also to other, foreign dangers. However, another factor has become very noticeable, especially in the last two summers, is the fact that the rising heat has led to heat-stroke, less strength and general discomfort for employees and guests alike. "Experiencing the effects of climate change first-hand may increase your understanding and openness to sustainable services," says [Stephanie Schießl](#), Sustainability Officer of SCHWARZWALD PANORAMA. "This helps raise awareness of the importance and necessity of sustainability".



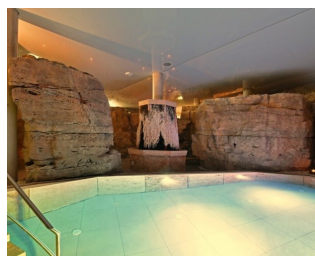
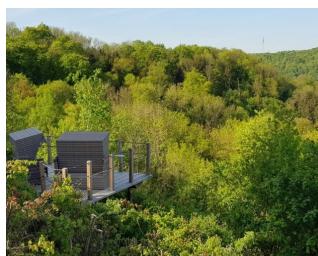
In Peru, the weather continues to become warmer and warmer. Especially at the coast with its partly desert-like, partly tropical climate, the transition between summer and autumn beings to blur. However, the most noticeable changes are in the rainforest region around the Amazon: "During the dry season between April and November there were only two to three 'frijas', now they come almost every month", Claire Andre from [Inkaterra](#) tells us. The 'frijas' are cold fronts with rain and strong winds, which bring temperatures of about 12-20°C from Patagonia and usually stay for three days.



From natural irrigation to air conditioning and shadowing

At the [Mawell Resort](#) in Baden-Württemberg, the longer dry periods in summer are particularly noticeable. Due to this, there is a much less water available in their own well, which is also used for irrigating the natural pond on the property. There are also numerous effects in the surrounding region: germination and blossoming phases begin earlier due to the warm winters, but are then interrupted by frost, which leads to the loss of yield for the surrounding winegrowers and farmers.

Temperatures also have a direct effect on hotel operations: "Even with today's best building practices, insulation and the like, these measures are no longer enough to prevent buildings from heating up. However, due to climate change and the associated higher temperatures, the guests expect an air-conditioned hotel room - climate change or not," explains Julia Schneider from Mawell Resort. "Future investments must therefore not only be made in the air-conditioning of existing buildings, but also in providing additional shading options."



Shared commitment

This year the Thai island of Phuket experienced one of the worst droughts of all time, so much so that joint efforts are becoming increasingly urgent from the [Keemala's](#) point of view. "What many of us have learned from this experience is that we can no longer be satisfied with what we have already done in terms of sustainability. We need to do much more to reduce consumption and protect resources, whether through new service standards or innovative programmes," says [Samornpun Somnam \(Tarn\)](#), Executive Director of Keemala.

From the very beginning, the Keemala has paid close attention to minimising plastic waste, using paper straws and being committed to forest conservation and the use of sustainable materials during construction. However, this dedication should be intensified in the future: "We want to move towards a 'zero waste' approach. We have expanded our organic garden and have integrated it into our guests' experiences. We offer Zero Waste Meetings and Retreats and eliminate plastic waste directly at the source by working with suppliers who also adhere to our principles. In addition, we only use natural and regional materials for decoration to further reduce the carbon footprint," Tarn said.

