

› INKATERRA ‹

RESERVA AMAZÓNICA

TAMBOPATA - PERU



FACT SHEET



INDEX

BRIEF DESCRIPTION	3
TAMBOPATA & PUERTO MALDONADO INFORMATION	4
LOCATION MAP	6
MAP OF NATURAL RESERVES	7
CABAÑAS	8
<ul style="list-style-type: none"> - Suite Tambopata - Suite Amazónica - Superior Río - Superior 	
HOTEL DISTRIBUTION	11
FACILITIES	12
<ul style="list-style-type: none"> - Inkaterra Lounge (Butterfly House) - Dining Room & Bar - ENA Spa - Inkaterra Gallery - Ecocenter 	
SERVICES	14
<ul style="list-style-type: none"> - Included Services - Additional services - Children & Family Specials 	
EXCURSIONS	15
<ul style="list-style-type: none"> - Included Services a la carte - Additional services 	
WILDLIFE OBSERVATION	21
SUGGESTED ITINERARIES	23
RACK RATES 2015	25

BRIEF DESCRIPTION

Inkaterra Reserva Amazónica is a gracious rainforest lodge, adjacent to the lush Tambopata National Reserve. Remote and pristine, yet easily accessible, this region is only a 35-minute flight from Cusco. Here, in the area known as the “Biodiversity Capital of Peru”, awaits the opportunity for discovering an incredible variety of species — birds, mammals, reptiles, insects, trees, among others.

A welcoming haven of 200 hectares (494 acres), Inkaterra *Reserva Amazónica* offers a range of land and river excursions that introduce guests to the magic of the rainforest. This simple yet hospitable, limited electricity lodge has been an ecotourism pioneer for 39 years, promoting innovative sustainable use of the Southern Peruvian Rainforest, and supporting important scientific investigations since opening in 1975 by its initial name *Cusco Amazonico*.

An award-winning ecolodge, Inkaterra *Reserva Amazónica* beckons from the steep banks of Peru’s meandering Madre de Dios River. Thirty-five solidly constructed thatched-roof *cabañas*, built on raised platforms in the indigenous style, surround an architecturally stunning main building and dining room, built of native materials that blend almost seamlessly into the jungle. Luxurious furnishings and delectable food offer a congenial complement to the simplicity of lantern-light and the rich sounds of the rainforest.

Tree-trunk boardwalks wind through the property, designed in the fashion of a native Ese’ Eja village overlooking the Madre de Dios, connecting *cabañas* with a pavilion that houses the dining room, as well as the bar and main lounge, plus balconies for bird watching and stargazing. The Ecocenter provides useful information to our guests, as well as a meeting point for excursions and night presentations.

A visit to the tropical rainforest is like entering another world. Two-thirds of all known plant and animal species make their home in these magic jungle regions, and hundreds of millions more are believed to be still undiscovered. Butterflies flit all around — some sky-colored and big as saucers, others tiny with translucent wings of red lace. Birdsong and raucous screeches pierce the thick air. Animals in this densely vegetated region tend to avoid human presence, meaning that opportunities for viewing them are variable and unpredictable.

The flora, however, is luxuriant and ever-present, with tangled vines, staggeringly tall trees, and leaves so huge they block the sun. There are engaging opportunities to experience the wonder of this diverse plant kingdom, to explore the lakes and wetlands, and to discover the rainforest ecosystems. The richness of the Amazon Basin also creates a spectacular arena for bird watching; more than 540 different bird species can be found here, including boisterous toucans, tanagers, flycatchers, and vibrant macaws. For a complete list of animals and recent sightings, please see our updated link at www.inkaterra.com.

TAMBOPATA & PUERTO MALDONADO INFORMATION

"There are very few places in the world that still shelter extraordinary natural riches. Tambopata in the Peruvian Amazon is one of them."

- Conservation International

DESCRIPTION AND LOCATION

The Tambopata National Reserve -adjacent to Inkaterra *Reserva Amazónica*- is one of the last easily accessible virgin tropical rainforests in the world. The Reserve, a 274,690-hectare area (678,774-acre), offers a wealth of biodiversity, as well as magnificent natural landscapes. Puerto Maldonado, known as the "Capital of Biodiversity," is the largest city of the Tambopata region. Overlooking the confluence of the Tambopata and Madre de Dios Rivers, Puerto Maldonado is 400 meters (1,312 feet) above sea level, 650 km (404 miles) from Cusco, and 15 km (9 miles) upriver from the Inkaterra lodge.

Considered by Conservation International to be a Global Mega Diversity Hot Spot, the Madre de Dios region has remained intact due to limited road access, and the protection offered by several major National Parks, including Manu, Candamo, Tambopata, Amarakaeri, and Bahuaja Sonene Reserves, with more than 3.6 million protected hectares (9 million acres).

THE RAINFOREST

A rainforest, or a wet forest, is an expansive territory with high annual rainfall, very dense plant growth, and a relatively warm temperature. Two-thirds of the world's plant and animal species make their home in these magic jungle regions, and hundreds of millions more are believed to be still undiscovered. Tropical rainforests have been called the "jewels of the Earth" and the "Earth's lungs;" they are essential to recycling carbon dioxide into oxygen. The rainforest has also been called the "world's largest pharmacy," because of the many natural medicines discovered there.

WEATHER

The weather is extremely tropical (hot and humid). Average temperature is 32°C (89 F), and varies from 25°C (77 F) to 42°C (107 F). December through March is usually the hottest season, with frequent afternoon rains. Between June and September you may need some warmer clothing, since the occasional "friaje" or Patagonia Cold Front can reduce the temperature to 10°C (50 F).

Note:

Visitors should be aware that despite our best efforts to provide the most complete experience and the best levels of service in the entire Peruvian Rainforest, we must sometimes adjust plans according to the changing weather conditions.

FLORA & FAUNA

Wildlife in the Tambopata Reserve is remarkable. Giant colorful parrots, toucans, and macaws share the forest with tamarins, and the gorgeous Southern American tapir (*Tapirus terrestris*). Our region is home to thousands of butterfly species and a large variety of monkeys, as well as four feline species, the endangered river otter, and much, much more. Numerous world records for biodiversity have been broken here, and new species are constantly being discovered. The Tambopata Reserve holds the world record for butterfly species registered - 1234 species; and world record in number of bird species spotted in a single day.

Note:

Keep in mind that the rainforest is an open ecosystem where many species co-exist. The Amazon has abundant wildlife, but many of the animals like to hide in the dense vegetation. Be aware that you may not actually see many of them.

ACCESS

Daily commercial flights connect Puerto Maldonado to Lima and Cusco. The lodge is 9 miles (15 km.) from Puerto Maldonado, about 45 minutes by motorized canoe, down the Madre de Dios River.

LOCATION MAP



MAP OF NATURAL RESERVES

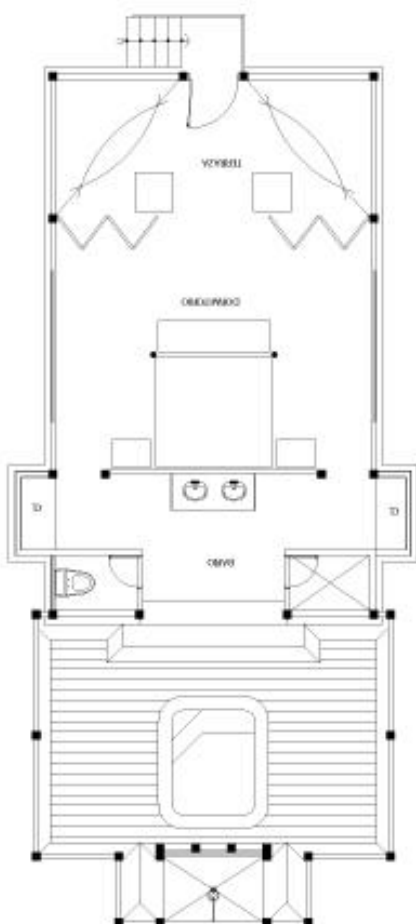


CABAÑAS

Thirty-five thatched roof *cabañas*, built on raised platforms in the style of the indigenous Ese' Eja people, are scattered around the reserve. Four categories of *cabañas* are offered, to meet guest preferences.

Type

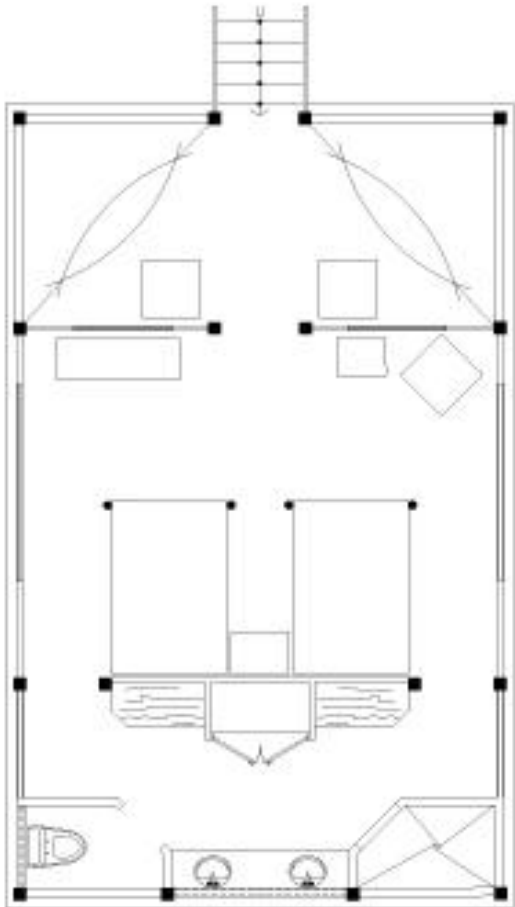
Tambopata Suite	2
Amazónica Suite	1
Superior Rio	9
Superior	23



TAMBOPATA SUITE

Your rainforest retreat comprises a private covered terrace with plunge pool, plus sunbathing chairs and outdoor shower in four integrated areas in a comfortable *Ese' Eja* style wooden *cabaña* with tall fishtail palm rooftops. Experience absolute respite in the 840 square-foot bedroom (78 square meters), which has 1 king or twin beds, graceful canopy mosquito net, all cotton sheets and hypoallergenic pillows. Added for your comfort are plush bathrobes and Andean rubber slippers along with rainforest gear such as umbrellas, flashlights, kerosene lamps and ceiling fan. Delight in the luxurious amenities of the open plan bathroom with a separate shower and toilet, double basins, hot water, lush towels, and a whole set of ecologically friendly toiletries. Stay for a slumber in the screened siesta lounge furnished with hammocks. Your Tambopata stay offers you the ultimate in amenities and convenience in the seclusion and splendor of the Southern Amazon.

AMAZÓNICA SUITE

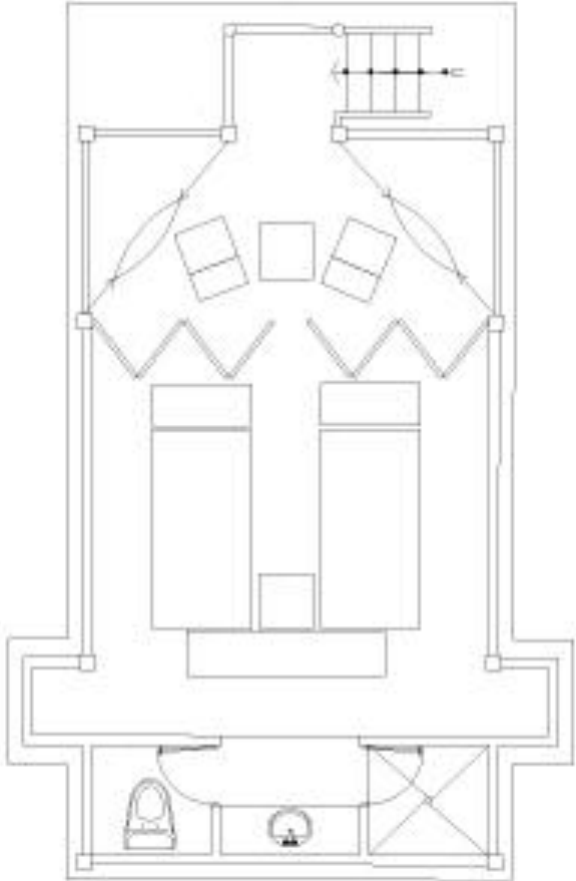


Stay in rustic luxury at the *Ese Eja*-style wooden *cabaña*, in the 60 square-meter integrated area (647 square feet), to include a spacious bedroom: 1 king or twin beds with canopy mosquito net, all-cotton sheets plus hypoallergenic pillows for your maximum comfort. Luxuriate in the sizeable bathroom with an independent shower and toilet, plus double basins, hot water, large towels, and a complete set of ecologically friendly toiletries. Lush bathrobes and Andean rubber soled slippers are added conveniences. To ease up your rainforest expedition, your suite is also geared with jungle comforts such as umbrellas, flashlights, kerosene lamps, ceiling fan, and then you can rest in a hammock at the screened siesta lounge. Select the sublime in creature comforts and superb services, the Inkaterra way, at your *Amazónica* suite stay.

SUPERIOR RIO

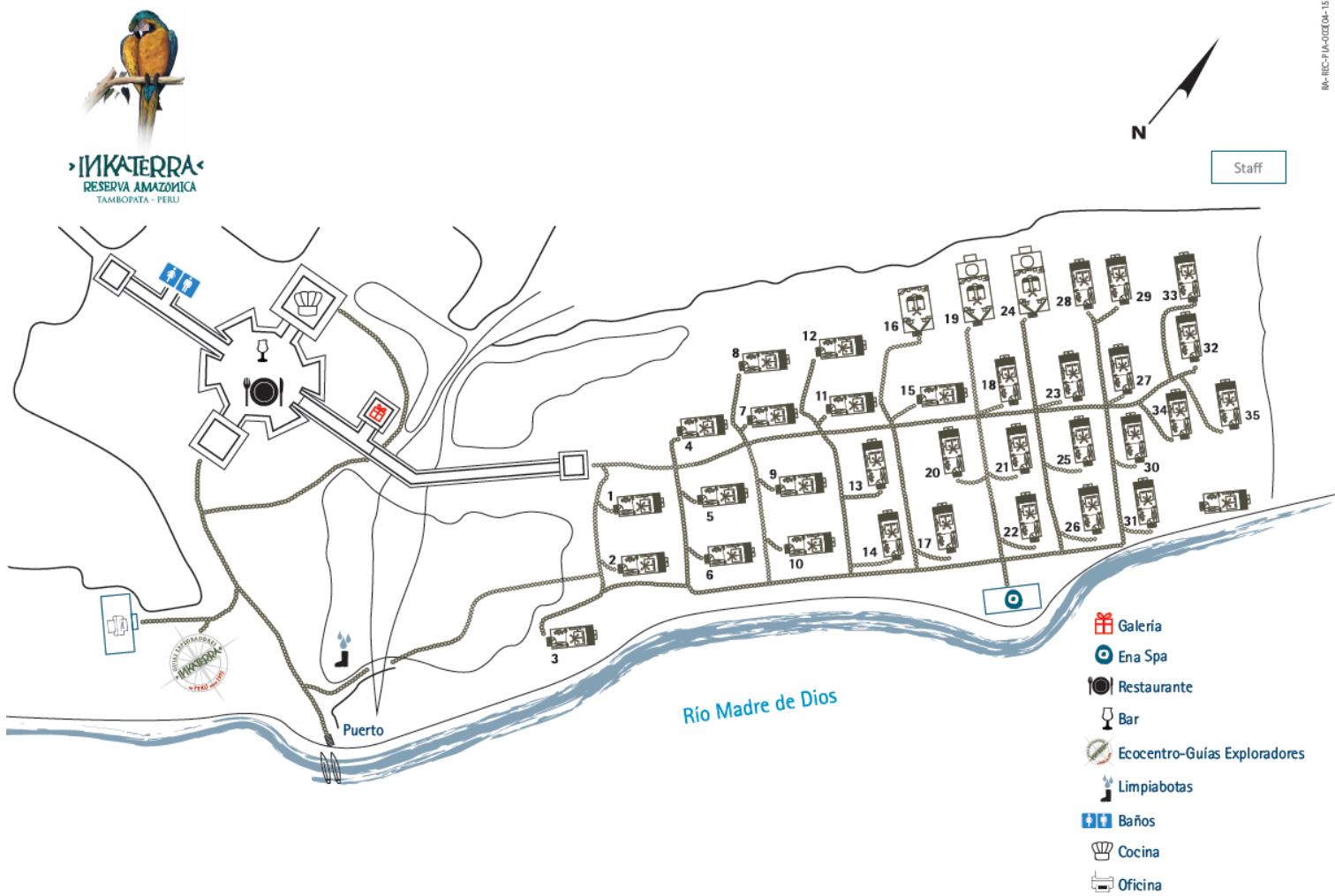
Enjoy an expansive view of the Madre de Dios River, from these comfortable *Ese Eja*- style, high thatched roof wooden *cabañas* of 38 square meters (408 square feet), comprises a twin bedroom with canopy mosquito net, outfitted with 100% cotton sheets and hypoallergenic pillows. Plush bathrobes and Andean rubber slippers are additionally supplied for your comfort. The open plan bathroom comes complete with a separate shower stall and toilet, hot water, large towels, and a complete set of ecologically friendly toiletries. An inviting screened siesta lounge area with hammocks, beckons one to rest and relax in the *cabaña* after a day's jungle journey. Supreme indulgence and sublime amenities await you at the Superior Rio *cabañas*.

SUPERIOR



Consider creature comforts and charming conveniences at these restful *Ese' Eja*-style wooden *cabañas* of 38 square meters (408 square feet), topped by a high thatched-palm roof. Stay in a twin bedroom with canopy mosquito net, outfitted with 100% cotton sheets and hypoallergenic pillows. For your added comfort, plush bathrobes and Andean rubber slippers are supplied. Soak up in the soothing and spacious bathroom with independent shower and toilet, hot water, large towels, and a complete set of ecologically friendly toiletries. Put your feet up and loosen up on the hammock of the screened siesta area. For your rainforest foray, your *cabaña* is equipped with umbrellas, flashlights, kerosene lamps for lighting, a central ceiling fan and an electric outlet.

HOTEL DISTRIBUTION



FACILITIES

DINING ROOM & BAR

Inspired by the tropical flavors of the Amazon region, meals and beverages at Inkaterra *Reserva Amazónica* are prepared with fresh local ingredients. We serve an international buffet breakfast; lunch and dinner are served à la carte. All meals include a variety of salads and fruits, as well as a selection of homemade breads. We also offer vegetarian options and a children's menu, upon request. Meals are served in the dining room, where you can also enjoy complete bar service, including a complimentary Pisco Sour at the Cocktail Hour (drinks not included in room-rates).

Breakfast	5:30 am	-	9:30 am
Lunch	12:30 pm	-	3:30 pm
Tea Time	3:30 pm	-	4:30 pm
Cocktail Hour	5:30 pm	-	7:00 pm
Dinner	7:30 pm	-	9:30 pm

ENA SPA

A unique SPA that combines the classic nurturing with the exotic ingredients of the Amazon. All of our Spa products are 100% natural, derived from local botanical extracts, thus providing the local spiritual and soothing experience. The ENA SPA is located on the banks of the *Madre de Dios* River, facing Rolin Island, providing a great spot for watching Amazonian sunsets, adding to the relaxation of the traveler's experience. The spa offers the following services: Reflexology, Cooling Massage, Cold Stones Massage, Cacao Body Exfoliation, Amazon Purification, and Foot Therapy.

Scheduled: 9:00 am – 9:00 pm

INKATERRA GALLERY (Gift Shop)

The gift shop, stocked with a variety of eco-friendly items, including insect repellents, basic over-the-counter medicines, film, batteries, aromatherapy products, and Inkaterra items such as t-shirts, caps, trousers, tote bags, ponchos, among others.

ECOCENTER

Located at the lodge's entrance is the starting point of the excursions and contains complete information about projects, outings, and activities offered at the lodge.

INKATERRA CANOPY TREE HOUSE

For the most unique and memorable rainforest experience the Inkaterra Canopy Tree House offers utter seclusion amidst the splendor of the Peruvian South Eastern Amazon. Built on a private platform and adjoining the famous Inkaterra Canopy Walkway at some 90-ft. (27-mt.) above the lush floor below, the Inkaterra Canopy Tree House provides service that is second to none and a jungle stay like no other. From the remarkable vantage point high in the canopy, guests can observe a range of wild animal species that are not usually visible from the ground, and listen to the amazing jungle sounds whilst enjoying a complimentary drink. Later on guests can soak up the atmosphere over a light dinner watching the stars above before taking a canopy night walk around this remote and fascinating tree top world.

SERVICES

INCLUDED SERVICES

- Round trip transportation by land and river (Airport/Lodge/Airport)
- Welcome drink
- Welcome Gift
- Personalized welcome
- Buffet breakfast / a la carte lunch & dinner
- Bottled water in room
- Tea Time
- Cocktail Hour
- English and Spanish Explorer Guide service
- Included excursions à la carte
- Basic equipment for each excursion
- Entrance fees to Lake Sandoval

ADDITIONAL SERVICES (at extra charge)

- Bar
- Laundry service
- ENA Spa treatments
- Flowering bath
- Binoculars for rent
- Musical group
- Private dining
- Celebration:
Cake, special souvenir, bottle of sparkling wine, and a special greeting card (maximum 4 guests)
- VIP service (personalized welcome, Inkaterra souvenir, greeting card, VIP toiletries, check-in/check-out at the main house or *cabaña*)
- Child's Explorer Kit (compass, cap, colored pencils, granola bar and flash light in a belt bag)
- Treasure Hunt:
Activity designed for children from 5 to 12. It consists of the accomplishment of fun and educative tasks such as riddles, handicrafts, drawings and research taking as a reference the fauna, flora, and the hotel experiences.

- **Sundowner:**
Contemplate the mysterious awakening of the rainforest at night while enjoying cocktails before dinner. Select your favorite scenery at: Umbrella Beach (seasonal), Twilight Creek or the Canopy Platforms.

CHILDREN & FAMILY SPECIALS

Inkaterra *Reserva Amazónica* is a family-oriented lodge that offers: additional beds or bed railings; highchairs; child-friendly Explorer Guides; a children's menu; and a child's explorer kit that comes with a cap, colored pencils, compass and a flash light in a belt bag. (Prior reservation and subject to availability).

The lodge recommends the following excursions and additional services with special activities for children between the ages of six and twelve: Trail System, Butterfly House, Twilight River, Inkaterra Canopy Walkway & Anaconda Walk, Treasure Hunt, Lake Sandoval (in dry season May- Oct.) and Inkaterra *Hacienda Concepción*.

EXCURSIONS

Excursions at Inkaterra *Reserva Amazónica* are included in our rates except those that require special schedules. The excursions vary in difficulty, duration, and attractions. Excursions are leaded by an Inkaterra Explorer Guide in Spanish or English, as requested upon reservation; some of these are specifically recommended for children.

*All activities and excursions are subject to change depending on weather conditions.

INCLUDED A LA CARTE EXCURSIONS

TRAIL SYSTEM

Take a walk to one of the trails that extend approximately 7,3 kilometers (4,5 miles) in Inkaterra *Reserva Amazónica* Natural Reserve and you will discover the incredible realm of the Amazon rainforest. The trails offer an excellent introduction to the environment of the jungle, as you walk past exotic rainforest trees, such as the kapok tree (*Ceiba pentandra*) and the beautiful ficus. Look down and spot the tiny lizards that rustle the leaves as they dart about on the forest floor. Gaze at the treetops and be amazed with the arena for bird watching. Observe the insect life and learn about the interpretation of the primary and secondary rainforest components, as well as the human impact and the relevance of the rainforests of the world.

DURATION: 1/4 day

DIFFICULTY LEVEL: I

ATTRACTIONS: Footprints / Birds / Native skills / Ants / Medicinal plants

RECOMMENDED FOR CHILDREN

RAINFOREST GARDEN

Walk along the lodge trails to the Inkaterra *Reserva Amazónica* Rainforest Garden just around the *cabañas*. This interesting native garden was started by the locals more than ten years ago showcasing native plants, trees and orchids. Learn to identify orchids, its flower parts, pollinators and different habitats. Know the fascinating history and legends, the practical and beneficial use of indigenous plants, as well as other remarkable rainforest flora. An in-depth explanation familiarizes you with the process, traditional use and highly interesting benefits of the plants and trees used for construction including those that were used for building the lodge, some of its fixtures, as well as native clothing accessories.

DURATION: 1/4 Day

DIFFICULTY LEVEL: I

ATTRACTIONS: Birds / Medicinal plants / Photography / Native food

RECOMMENDED FOR CHILDREN

TWILIGHT RIVER

On this guided afternoon boat ride, you will witness the enchanting transformation from a diurnal to a nocturnal environment, as animals and birds of the daytime are replaced by species specially adapted to the night. As you enjoy their paradise, you will learn about their habits while searching for nightjars, owls, capybaras and caimans. In addition, on a clear night the southern hemisphere stars can be appreciated.

DURATION: 1/4 day

DIFFICULTY LEVEL: I

ATTRACTIONS: Photography / Astronomy

RECOMMENDED FOR CHILDREN

RAINFOREST BY NIGHT

Walk through the Inkaterra Ecological Reserve at night. Biological activity differs greatly between night and day in the Amazonian ecosystem. Venture into the forest and experience the mystery of the animal activity that awakens in the rainforest after dark, enhancing animal resources to create new adaptation mechanisms. Listen to nocturnal forest sounds and spot species that only emerge at night.

DURATION: 1/4 day

DIFFICULTY LEVEL: I

ATTRACTIONS: Footprints / Astronomy / Birds / Frogs

WETLANDS

Visit the remarkable wetlands system in the 200-meter boardwalk over the marshes (*Aguajales*) rainforest swamps. The wooden footbridge is elevated 1 meter from the ground to allow space when the water rises during the rainy months. See the transition of the forest ecosystem from dry to marshlands, and observe the various species of amphibians, reptiles, snakes, birds and mammals. Get to know the lush flora and trees, how they adapt to the wetland ecosystem, their benefits and uses.

DURATION: 1/2 day

DIFFICULTY LEVEL: I

ATTRACTIONS: Birds / Frogs / Ants / Footprints / Photography

RECOMMENDED FOR CHILDREN

INKATERRA CANOPY WALKWAY

Take a 15-minute walk along the trail towards the Inkaterra Canopy Walkway Interpretation Center. A short briefing will be given about the project history, structure and the highlights in this unforgettable adventure at the Inkaterra Canopy Walkway. You will ascend the first tower and walk through the treetops of the giant Amazon Basin, across hanging bridges. Views unimaginable from below and possible only from the air, are revealed on this network of towers, bridges and platforms. Be on the lookout for different birds of the jungle, such as toucans, woodpeckers, trogons, among many others, or try to identify them through their songs, from the observation decks. Learn about the interaction between flora and fauna at the various levels of the forest and its integration into the rainforest ecosystem.

DURATION: 1/2 Day

DIFFICULTY LEVEL: II

ATTRACTIONS: Birds / Ants / Astronomy/ Photography

RECOMMENDED FOR CHILDREN

INKATERRA CANOPY WALKWAY & ANACONDA WALK

A 5-minute ride by motorized canoe takes you to the Inkaterra Canopy Walkway Interpretation Center. After ascending the first tower, at 95 feet (29 mts.) above the forest floor, you will literally walk through the treetops for one-and-a-half hours along suspension bridges that link eight observation platforms. Enjoy landscapes and vistas that would be unimaginable from below, while on the look-out for giant strangler fig trees, orchids, toucans, woodpeckers, trogons and –with luck- birds of prey, monkeys or sloths. After your descent from the Canopy, experience the Anaconda Walk for about 30 minutes along the 200-meter wooden bridge over the wetland. In this lush ecosystem, you may observe the various species of amphibians, snakes, birds, mammals and abundant flora and trees of this seasonal flooded marshland.

DURATION: 1/2 day

DIFFICULTY LEVEL: II

ATTRACTIONS: Birds / Photography / Astronomy / Frogs / Ants

RECOMMENDED FOR CHILDREN

LAKE SANDOVAL

A 30-minute ride by motorized canoe takes you to the Tambopata National Reserve, where wildlife surrounds you as you enjoy the one and a half hour walk along three kilometers of trails to reach Lake Sandoval. Glide in a canoe, across a beautiful, mirror-like oxbow lake that is home to the endangered giant river otter, as well as red howler monkeys, macaws, prehistoric hoatzins, also called "shanshos", point-tailed palm creepers and side-neck turtles.

DURATION: 1/2 day

DIFFICULTY LEVEL: II

ATTRACTIONS: Birds / Photography / Ants / Canoe

RECOMMENDED FOR CHILDREN (except during the months of rain, Dec.-Mar.)

INKATERRA HACIENDA CONCEPCIÓN

A 35-minute ride upriver takes you to Inkaterra *Hacienda Concepción*, home to a remarkable Botanical Garden with over 200 different species of rainforest plants. An in-depth explanation familiarizes you with the processing, uses and benefits of these traditional indigenous plants, including fascinating native medicinal uses. Next, take a 30-minute canoe trip on a small lake and watch for wildlife – turtles, sun grebes, nightjars and herons. The activity ends in the forest with the observation of cacao and rubber tree plantations.

DURATION: 1/2 day

DIFFICULTY LEVEL: II

ATTRACTIONS: Birds / Native skills / Medicinal plants / Ants / Canoe / Native food

RECOMMENDED FOR CHILDREN

GAMITANA CREEK

Enjoy a motorized canoe ride, and then a long walk to reach the adventures of Gamitana creek. The sights, scents and sounds of the jungle will surround you as you walk for one and a half hour, rambling through the rainforest along the banks of this winding, dark-water creek that is home to piranha, caimans, turtles and an abundance of brightly colored birds, towards "Sanipanga", embarkation point. Board a canoe and navigate 1 hour down stream to the Gamitana Model Farm, appreciating the rich plant and animal life along the way. Enjoy a short guided walk to learn about an Amazon model farm and get the chance to make your own plantain flour used to make bread for breakfast at the lodge.

DURATION: 1/2 day

DIFFICULTY LEVEL: II

ATTRACTIONS: Birds / Canoe / Native Skills / Native Food / Fishing

TAMBOPATA

Following a short motorboat ride from the lodge, this activity begins with a walk to Lake Sandoval. Be on the lookout for hoatzins, herons and ospreys as you glide across this mirror-like oxbow lake in a wooden canoe. Your excursion continues with a hike through the reserve to Inkaterra *Hacienda Concepción*. The surrounding vegetation will be roused on this trip, home to the paiche and black caimans, red howler, brown capuchin and squirrel monkeys; and the extremely rare and endangered giant river otter. Lunch at Inkaterra *Hacienda Concepción* is followed by a guided visit to a garden containing more than 200 medicinal plants and the possibility to practice the native arch and arrow usage.

DURATION: 1 day

DIFFICULTY LEVEL: III

ATTRACTIONS: Footprints / Birds / Native Skills / Photography / Medicinal plants / Ants / Canoe / Native food

ADDITIONAL EXCURSIONS (at extra charge)**ORNITHOLOGY**

Bird watching experience in the rainforest. Travel by boat or walk through the forest accompanied by an Inkaterra Explorer Guide on the lookout for your preferred bird species. Return to the lodge by sunset. (The interpretation level will vary according to preferences).

DURATION: 1 day

DIFFICULTY LEVEL: II (intermediate birdwatching level)

ATTRACTIONS: Birds / Photography

LAKE VALENCIA

This one-day experience in the jungle begins with a two-hour boat ride downriver to the scintillating Valencia oxbow lake. Fishing in the lake is perfectly complemented by sightings of varied wildlife and birds, including ospreys, herons, huge flocks of flying macaws and the king vulture. For lunch savor the fish you caught in the lake, served alongside other local food. Walk 1-hour in the primary forest and Brazilian Nut fields on your way around the rainforest. Return to the lodge by boat.

DURATION: 1 day

DIFFICULTY LEVEL: III

ATTRACTIONS: Footprints / Birds / Native skills / Fishing / Photography / Astronomy / Canoe / Native food

RECOMMENDED FOR CHILDREN

WILDLIFE OBSERVATION

Mammals

Agouti (*Dasyprocta variegata*)
 Brown Capuchin Monkey (*Cebus apella*)
 Capybara (*Hydrochoerus hydrochaeris*)
 Collared Peccary (*Pecari tajacu*)
 Giant River Otter (*Pteronura brasiliensis*)
 Red Brocket Deer (*Mazama americana*)
 Saddleback Tamarin (*Saguinus fuscicollis*)
 South American Tapir (*Tapirus terrestris*)
 Southern Amazon Red Squirrel (*Sciurus vulgaris*)
 Squirrel Monkey (*Saimiri boliviensis*)
 Three-toed Sloth (*Bradypus variegatus*)

Birds

Blue and Yellow Macaw (*Ara ararauna*)
 Blue-headed Macaw (*Ara couloni*)
 Blue-headed Parrot (*Pionus menstruus*)
 Cobalt-winged Parakeet (*Brotogeris cyanoptera*)
 Cuvier's Toucan (*Ramphastos cuvieri*)
 Jabiru (*Jabiru mycteria*)
 Mealy Parrot (*Amazona farinose*)
 Red & Green Macaw (*Ara chloropterus*)
 Scarlet Macaw (*Ara macao*)
 Snowy Egret (*Egretta thula*)
 Spix's Guan (*Penelope jacquacu*)
 Yellow-rumped Cacique (*Cacicus cela*)
 Umbrella Bird (*Cephalopterus ornatus*)
 Point-tailed palmcreeper (*Berlepschia rikeri*)

Amphibians

Bufo (*Bufo marinus*)
 Horned Frog (*Ceratophrys cornuta*)
Hyla koechlini

Reptiles

Dwarf Caiman (*Paleosuchus palpebrosus*)

Spectacled Caiman (*Caiman crocodylus*)

Black Caiman (*Melanosuchus niger*)

Invertebrates

Tarantula

Ants (*Eciton burchelli*, *Atta cephalotes*, *Allomerus octoarticulatus*, *Cephalotes atratus*)

Butterflies (*Dione glycera*, *Danaus plexippus*, *Greta Hermata koechlini*, *Chorinea sylphina*)

SUGGESTED ITINERARIES

Your itinerary is personalized upon your arrival, to provide the richest possible experience. Each guest coordinates his or her individual schedule with their Explorer Guide, depending upon length of stay, desired activity levels, weather conditions and personal preferences. Nature is all around and closes enough to blur the boundaries. You will almost certainly find yourself connecting with the natural world as never before. Since this may be your first rain forest experience, we suggest the following itinerary to help you get the most from your visit:

3 Days / 2 Nights

	Day 1	Day 2	Day 3
AM		Lake Sandoval	Return by motorized canoe to Puerto Maldonado
	Arrival by motorized canoes to the lodge		Visit to Butterfly House
PM	Trail System	Inkaterra Canopy Walkway	
	Twilight River		

4 Days / 3 Nights

	Day 1	Day 2	Day 3	Day 4
AM		Lake Sandoval	Gamitana Creek	Return by motorized canoe to Puerto Maldonado
	Arrival by motorized canoes to the lodge		Hacienda Concepción	Visit to Butterfly House
PM	Trail System	Inkaterra Canopy Walkway	Rainforest by night	
	Twilight River			

5 Days / 4 Nights

	Day 1	Day 2	Day 3	Day 4	Day 5
AM		Lake Sandoval	Gamitana Creek	Hacienda Concepción	Return by motorized canoe to Puerto Maldonado
	Arrival by motorized canoes to the lodge				Visit to Butterfly House
PM	Trail System	Inkaterra Canopy Walkway	Rainforest Garden	Wetlands	
	Twilight River		Rainforest by night		



RACK RATES 2015

RATES PER GUEST IN AMERICAN DOLLARS AND NUEVOS SOLES

	3D/2N PRGM	4D/3N PRGM	5D/4N PRGM	ADD. NIGHT
CABAÑA (35)	USD - PEN	USD - PEN	USD - PEN	USD - PEN
Superior Single (24)	673 - 2,154	871 - 2,788	926 - 2,964	220 - 704
Superior Double	541 - 1,732	711 - 2,274	777 - 2,485	211 - 676
Superior Rio Single (8)	818 - 2,619	1,043 - 3,337	1,091 - 3,492	301 - 964
Superior Rio Double	645 - 2,063	835 - 2,672	895 - 2,865	239 - 764
Suite Amazonica Single (1)	950 - 3,041	1,201 - 3,844	1,235 - 3,953	337 - 1,077
Suite Amazonica Double	739 - 2,365	948 - 3,034	999 - 3,196	266 - 852
Suite Tambopata Single (2)	1,146 - 3,668	1,438 - 4,601	1,456 - 4,660	394 - 1,260
Suite Tambopata Double	879 - 2,812	1,117 - 3,573	1,155 - 3,696	305 - 975
Children	50% as per selected category and program			

INCLUDED

- 10% service charge
- Assistance at the airport
- Round trip transportation by land and river (Airport / Lodge / Airport)
- Overnights at Inkaterra Reserva Amazónica
- Full board
- Bottled water
- À-la-carte excursions (Spanish and English)
- Inkaterra Canopy Walkway and Anaconda Walk
- Basic equipment for each excursion
- Entrance fees to Lake Sandoval (SERNANP), Inkaterra Canopy Walkway

NOT INCLUDED

- Personal expenses

- Additional services
- Compulsory supplement of US\$ 85.00 per person on the nights of December 24th and 31st.

ADDED VALUE

- Welcome Drink
- Welcome Gift
- Tea Time
- Cocktail Hour

NOTES

- For triple occupancy consider the same rate applied per person in double occupancy.
- Maximum one additional bed per *cabaña*, limited capacity

- Children conditions applicable under 12 when accompanied by one or two adults in the same *cabaña* - maximum 2 per *cabaña*
- We do not recommend children under 5, otherwise guest must sign disclaimer
- Excursion schedules may vary depending on weather conditions and demand
- Additional and private services, as well as Explorer Guides in other languages, available upon request at an extra cost
- Suggested itineraries available
- Rates subject to changes without prior notice

10% Off

Book all 3 Inkaterra hotels for the same travelers and get this special discount.

NOTE: EXPORT SERVICES (DL No. 919) Regarding the General Tax Sales (IGV), Peruvian law considers accommodation to non-resident guests as export service. In order to be exempted and as a requirement, all non-resident guests must present upon check in their original passport and Andean Immigration Card - provided at your arrival to the country and with no more than 60 days after the arrival date indicated at the Andean immigration card. Rates subject to the Investment Promotion Law in the Amazon (Ley No 27037)



OFICINA LIMA:
T.+51 1 610 0404 / F.+51 1 422 4701
Andalucía 174 Miraflores - Lima 18 - Peru
central@inkaterra.com

USA & CANADA 1 800 442 5042
UK 0 800 458 7506
SPAIN 900 878 172
sales@inkaterra.com

29 Ene 2015

www.inkaterra.com

Andalucía 174
Lima 18 - Peru

T. (51 1) 610 0400
F. (51 1) 422 4701

www.inkaterra.com