

› INKATERRA ‹

MACHU PICCHU PUEBLO HOTEL

PERU



FACT SHEET



INDEX

BRIEF DESCRIPTION	3
MACHU PICCHU INFORMATION	4
LOCATION MAP	6
CASITAS	7
- Villa	
- Inkaterra Suite	
- Suite	
- Junior Suite Deluxe	
- Junior Suite	
- Superior Deluxe	
- Superior	
HOTEL DISTRIBUTION	13
FACILITIES	14
- UNU Spa	
- Dining Room & Bar	
- Café Inkaterra	
- Inkaterra Gallery	
- Ecocenter	
SERVICES	15
- Included Services	
- Additional Services	
- Children & Family Specials	
EXCURSIONS	17
- Included Excursions	
- Additional Excursions	
WILDLIFE OBSERVATION	23
RACK RATES 2015	24

BRIEF DESCRIPTION

Inkaterra Machu Picchu Pueblo Hotel, a select boutique nature hotel considered “The Garden of Eden” by *Condé Nast Traveler*, lets you experience life at an exclusive royal Inca retreat for your stay. You will visit the ancient Machu Picchu Citadel in company of a certified English-speaking Inkaterra Explorer Guide. You may also enjoy the benefits of a de-stress massage at our mystical UNU Spa, and you will have the opportunity to participate in group excursions, such as bird watching or an orchid walk, offered on our 5-hectare (12-acre) grounds. Meals included in your Inkaterra dining package will be served in a glass-walled restaurant, offering stunning views of the rushing Vilcanota River and the imposing green Andes Mountains.

Inkaterra Machu Picchu Pueblo Hotel occupies a private five-hectare (12-acre) mountainside reserve, located at the foot of Machu Picchu Mountain, near the Machu Picchu Pueblo railroad station. With the look and feel of a rustic Andean Village, this welcoming retreat offers travelers an authentic travel experience, in an atmosphere of refinement and thoughtful hospitality. The spectacular grounds are laced with paths that wind past waterfalls and gardens; trails wander through wild forest. This is a place to relax, while exploring nature and encountering the wonders of the Inca civilization, feeling an authentic travel in an atmosphere of refinement, caring, and warm hospitality.

Skilled artisans built the 85-room boutique hotel, using stone, adobe, stucco, and eucalyptus beams to create a lovely Andean Village ambience. Travelers follow stone pathways to their rooms, located in comfortable one- or two-story whitewashed cottages. Andean artifacts and textiles decorate the bar, boutique, and reception building; the dining room displays scores of pre-Columbian relics. Charming features abound; among them are an inviting reading room, a lounge with crackling fireplaces, and the Andean sauna—an igloo made from indigenous bamboo and fresh eucalyptus leaves.

The hotel grounds include more than 5 km. (3.12 miles) of ecological trails, and several spots of observation and contemplation of flora (including 372 native orchid species in their natural habitat), birds (207 species), and butterflies (111 species), amongst a diversity of natural wonder.

MACHU PICCHU INFORMATION

"Machu Picchu was... the favored country retreat for the royal family and Inca nobility." - The New York Times – recent study from Yale University.

OVERVIEW

Machu Picchu Historical Reserve is a magical place that fascinates through its vast archaeological remains, geological formations, unique flora and fauna, and spectacular cloud forest. The most remarkable part of the Reserve is the archaeological site of Machu Picchu, one of the world's greatest sites.

The Incas built this citadel at the end of the fourteenth century. As centuries passed, the fortress became totally overgrown by vegetation, and virtually disappeared from sight. Hiram Bingham, Director of the Yale Peruvian Expedition, rediscovered Machu Picchu in 1911. Since then, it has become known as one of the new 7 Wonders of the modern World.

Recent research compiled by Yale University has revealed that the Machu Picchu Citadel was not, as Hiram Bingham believed, the traditional birthplace of the Inca people, nor was it the final stronghold of the Incas in their losing struggle against the Spanish. Instead, Machu Picchu, built by Pachacutec at the peak of the empire, was a favored retreat for the Inca nobility.

Machu Picchu Historical Reserve is located above the town of *Machu Picchu Pueblo* at 2,450 meters (8,038 ft.) a.s.l. The site covers an area of 32,592 hectares (80,535 acres).

LOCATION

The Machu Picchu Historical Reserve is located in a cloud forest between the Andes and the Amazon Basin, 110 km (70 miles) from the City of Cusco, in a green canyon on the Vilcanota, also named Urubamba River.

ACCESS FROM CUSCO

By Train

Several trains depart daily from Poroy-Cusco and Ollantaytambo to Machu Picchu, from 6:00 a.m.

Schedules and the duration of the journey vary depending on the train station selected (3.5 hours from Cusco and 1.5 hours from Ollantaytambo). Round-trip costs range from US \$100.00 to more than USD\$700.00 per person, depending on

the choice of service.

Trekking

Scheduled three to five-day treks on the Inca Trail require previous arrangements and advanced booking, due to limited quotas. Most treks start from km. 88, Qorihuayrachina, at 2,600 meters (8,530 feet) above sea level.

The Inca Trail is closed every year during the month of February for maintenance.

WEATHER

Machu Picchu enjoys a subtropical highland climate - warm and humid during the day and cold at night, with temperatures varying between 8°C (47°F) and 22°C (72°F). Humidity ranges between 77% and 91%, and annual rainfall is 400-1000 mm (16-39 inches). Dry season is from May to October, and the orchid season is from November to April.

FLORA & FAUNA OF THE REGION

Machu Picchu's natural exuberance is characteristic of the Andean Cloud Forest — a land of vibrant orchids, exotic bromeliads, colorful butterflies, and several species of indigenous birds, such as the Inca Roacher (*Thryothorus eisenmanni*), Parodi Hemispingus (*Hemispingus parodi*), and Green and White Hummingbird (*Leucippus viridicauda*).

Several kinds of hummingbirds, monkeys, and various endangered species such as the Peruvian Cock-of-the-Rock (*Rupicola peruviana*), the Andean Spectacled Bear (*Tremarctos omatos*), Giant River Otter (*Lontra longicaudis*), and the Mountain Lion (*Felis concolor*) are also seen in the Machu Picchu Historical Reserve.

LOCATION MAP



CASITAS

The 85 *casitas*, located near the tea plantation, designed with the harmony of a natural Andean garden, surrounded by orchids and birds; an ideal place for resting before and after your visit to Machu Picchu.. Some overlook the orchid gardens, while others face the Vilcanota River. All *casitas* have a comfortable sitting area, plus spacious bathroom with Spanish style showers. Each is furnished with a suitcase rack and colonial-styled armoire for the convenience of our travelers, who rest in luxury under fine cotton sheets, thick alpaca blankets, and handmade wool coverlets, on double beds, queen, or king size beds.

TYPE

Inkaterra Villa	(1 Suite + 1 Inkaterra Suite)
Inkaterra Suite	2
Suite	4
Junior Suite Deluxe	7
Junior Suite	8
Superior Deluxe	19
Superior	45

INKATERRA VILLA

A royal Inca retreat thoughtfully designed for discerning travelers seeking a truly authentic encounter. One Inkaterra Suite adjoining one Suite, each with a terrace and plunge pool, overlooks a lush garden with private entrance. Travelers register in the privacy of the Villa, and our extended VIP treatment includes round-the-clock butler service. Travelers may also choose to dine privately, served by Inkaterra staff. Sleeping accommodations are two king / twin and two double beds with 100% cotton. Each Villa has an open wood-burning fireplace, plus sitting and dining areas. With tranquil views of the private garden, the expansive marble bathrooms offer an indoor and open-air shower, a tub, a separate commode area, cotton robes and Andean slippers crafted from recycled materials. The acclimatized room includes free satellite internet access, plasma screen with Direct TV and DVD player, iPod speakers, complementary minibar, safety box, and cordless telephone. Every Inkaterra amenity and convenience is part of the Villa experience, along with the ultimate in pampered seclusion and service. (293 m². / 3154 sq. ft.)



Note. - This is a sample floor plan. Actual room may differ.

INKATERRA SUITE

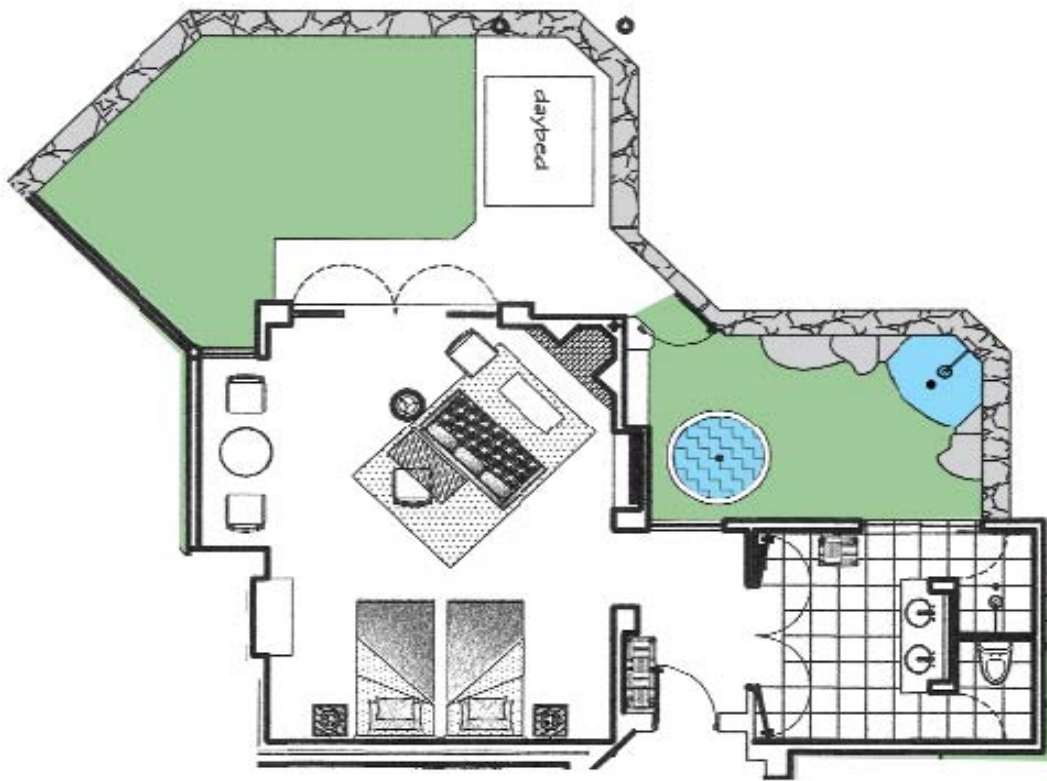
A private paradise with a personal garden and covered terrace, plus heated plunge pool, extra-large day bed, and outdoor shower. This beautifully appointed space includes an expansive sleeping area with king bed, 100% cotton sheets and additional seating; a second room features a gracious area for working or relaxing, as well as dining for four in front of an open fireplace. The luxurious marble bathroom has two basins and a secluded garden view tub, a double closet, a separate shower and commode, two cotton robes and Andean slippers crafted from recycled materials. The acclimatized room includes free satellite internet access, plasma screen with Direct TV and DVD player, iPod speakers, complimentary minibar, safety box and cordless telephone. This *casita* includes additional Inkaterra amenities, plus the added conveniences of the Suite and three-daily turndown services (176 m². / 1894 sq. ft.).



Note. - This is a sample floor plan. Actual room may differ.

SUITE

Experience VIP treatment, beginning with turndown service three times a day and an array of added amenities, such as free satellite internet access, plasma screen satellite TV with DVD player, iPod speakers, minibar, safety box and cordless telephone. Personalized comfort is assured, with one king or two double beds, 100% pima cotton sheets plus room-controlled heating, closet area, robes, Andean slippers crafted from recycled materials, outdoor shower, heated plunge pool and a day bed. The luxuriant marble bath has two basins, independent shower and toilet (117 m². /1259 sq. ft.)

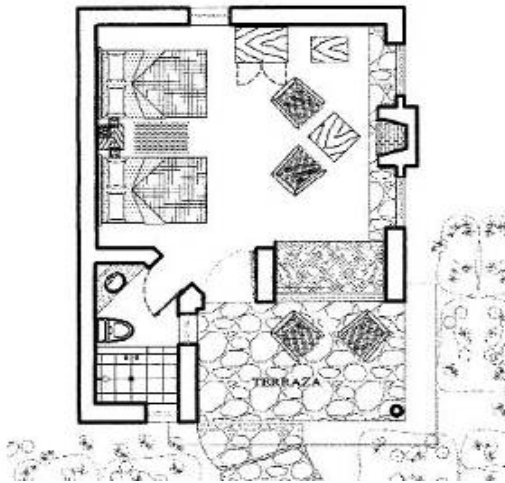


Note. - This is a sample floor plan. Actual room may differ.

JUNIOR SUITE DELUXE

An expanded Junior Suite with a lavish bathroom that includes a marble basin and telephone. One king or two double beds, 100% pima cotton sheets along with hypoallergenic pillows, a colonial style wardrobe, a room heater, separate sitting, dining for two, and work area in front of a fire place provide this *casita* with additional comfort. Amenities include Andean slippers crafted from recycled materials, robes, safety box, iPod speakers, a complete set of environmentally friendly toiletries, and a complimentary bottle of Pisco (42 m². / 452 sq. ft.)

JUNIOR SUITE



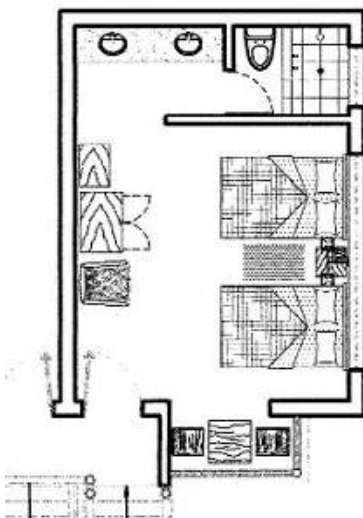
A spacious setting offers a separate area for reading and relax, with iPod speakers next to the fireplace, plus the possibility of a terrace. One king or two double beds, 100% cotton sheets along with six posh hypoallergenic pillows, a room heater, separate sitting, dining for two and a large private bathroom with a telephone provide this *casita* with added comfort. Amenities include Andean slippers crafted from recycled materials, robes, a colonial style wardrobe plus a complete set of environmentally friendly toiletries. (40 m²/431 sq. ft.)

Note. - This is a sample floor plan. Actual room may differ.

SUPERIOR DELUXE

A fireplace in front of a dining area, plus a spacious newly renovated bathroom, create an ambience of informal elegance. These attractive *casitas* have one queen or two double beds, with 100% cotton sheets and hypoallergenic pillows. Amenities include Andean slippers crafted from recycled materials, robes, a colonial style wardrobe plus a complete set of environmentally friendly toiletries and a safety box (30 m². / 323 sq. ft.)

SUPERIOR



This is the perfect sanctuary for simple relaxation with one queen or two double beds, 100% cotton sheets and hypoallergenic pillows, plus an inviting dining area for two. Decorated with local crafts and eucalyptus beams, this *casita* includes a room heater, a colonial style wardrobe, robes, Andean slippers crafted from recycled materials, plus a complete set of environmentally friendly toiletries and a safety box, all provided for the comfort of our travelers (30 m². / 323 sq. ft.)

Note. - This is a sample floor plan. Actual room may differ.

HOTEL DISTRIBUTION



www.inkaterra.com

FACILITIES

UNU SPA

UNU Spa is Inkaterra's unique SPA concept, combining the classic nurturing of a SPA with a mystical Andean approach. All products are 100% natural, obtained from local botanical extracts, providing a pleasing spiritual, sensual and soothing experience. The UNU SPA is located near the Andean sauna and the flowing spring-water plunge pool area. Treatments can take place in your *casita* for an additional charge of US \$10 (The Andean Hot Stones treatment is only offered in UNU SPA).

Scheduled: 9:00 am – 9:00 pm

DINING ROOM AND BAR

The restaurant and adjacent terraces were built as a large glass house with an exceptional view of the Vilcanota River and the surrounding green mountains.

Breakfast	05:00 am – 10:00 am
Lunch	11:30 am – 04:00 pm
Tea Time	04:30 pm - 05:30 pm
Cocktail Hour	06:00 pm – 07:00 pm
Dinner *	06:00 pm – 10:00 pm

Capacity: 70 travelers / 18 tables.

*Prior Reservation upon arrival. Maximum groups of 4 guests per table. Groups that require a larger table can be accommodated at Café Inkaterra.

CAFÉ INKATERRA

This restaurant blends Andean cuisine and architecture with a contemporary approach, creating innovative fusion-style fare. Café Inkaterra is situated under a traditional Amazonian *Ese'Eja* palm-thatched roof, and is decorated with regional crafts.

Both an experience and a destination, Café Inkaterra features an intimate setting overlooking the Vilcanota River. It is the ideal place for travellers to unwind, far from the crowds, after visiting the ancient Machu Picchu Citadel and wait for their train after check out.

Lunch	11:30 am	-	04:00 pm
Tea Time	04:30 pm	-	05:30 pm
*Dinner	07:00 pm	-	10:00 pm

Capacity: 90 travelers / 23 tables.

*Prior Reservation upon arrival. Free use of computers and internet services for in-house travelers only at Café Inkaterra, from 9 am to 9 pm (maximum 30 minutes use per guest).

ECOCENTER

It is the house of the Inkaterra Explorer Guides. Located in the middle of the hotel, adjacent to the Dining Room, it is the starting point of the excursions. There you can find books, magazines, information about ITA conservation projects outings, and activities offered.

INKATERRA GALLERY

Our boutique gift shop offers hand-crafted silver jewellery, crafts, clothing, guidebooks, souvenirs, postcards, film, and postal service, as well as cosmetics, skin care products and aromatherapy sets, plus a full range of hotel keepsakes.

SERVICES

INCLUDED SERVICES

- Personalized welcome
- Buffet breakfast / A la carte dinner
- Turndown service
- Check-in: 1 pm, check-out: 11 am
- Included excursions
- Internet (at Café Inkaterra from 9 am to 9 pm)
- Welcome tea
- Welcome Gift
- Tea Time
- Pisco Sour

ADDITIONAL SERVICES (at extra charge)

- A la carte lunch
- Private Dinner
- Lunch box
- Bar
- UNU Spa
- Early check-in / late check-out (subject to availability)
- Additional bed (limited capacity, maximum one per *casita*)
- Day use
- International/national phone calls
- Room service
- Laundry service
- Nanny upon request and prior notice
- Binoculars for rent
- Child's Explorer Kit (flashlight, cap, colored pencils, magnifying glass, and granola in a belt bag)
- Musical group
- Special events and celebrations (prior reservation or subject to availability)
- Pay-to-The-Earth Ceremony:
Ancient ritual to thank the Andean gods, performed by a shaman from the region (maximum for 15 guests)
- Vow renewal:
Renew vows with a shaman from the region. (Plus extras, outside hotel)
- Celebration:
Cake, special souvenir, bottle of champagne, and a special greeting card in Quechua (maximum for 4 guests)
- Sundowner:
Contemplate the transformation of the cloud forest at twilight while enjoying cocktails and starters, and listening to the sounds of nature.
- Treasure Hunt:
Activity designed for children, from 5 to 12. It consists on the accomplishment of fun and educative tasks such as riddles, handicrafts, drawings and research, taking as a reference the fauna, flora, and the hotel experiences.

CHILDREN & FAMILY SPECIALS

Inkaterra Machu Picchu Pueblo Hotel is a family-friendly hotel that offers two Villas for parents traveling with children. Our family services include special children's menus, cribs, highchairs and child-friendly Inkaterra Explorer Guides. Additionally the hotel offers a special Child's Explorer Kit (pack with flashlight, cap, postcards, and colour pencils), and a Treasure Hunt activity upon request (at an additional charge).

The hotel recommends the following excursions with special activities for children between the ages of six and twelve: Machu Picchu, Spectacled Bear, Nature Walk, Orchids and Tea.

EXCURSIONS

A variety of excursions are available within the five hectares(12.3 acres) of pristine cloud forest surrounding Inkaterra Machu Picchu Pueblo Hotel, a quiet retreat for the mind and body, as well as a base for numerous adventures and explorations. Home to an incredible diversity of fauna and flora, the hotel's trails lead to cascading streams and historically sacred sites. During their stay, travelers may choose to explore a particular subject, become involved in one of our projects or simply immerse themselves in the spiritual wonder of the area.

Days at Inkaterra Machu Picchu Pueblo Hotel are organized around the weather, the amount of time that travelers want to spend at the Citadel and the train schedules. We recommend an itinerary for a two- or a three-day visit. The hotel offers varied excursions covering a range of three difficulty levels: Easy (I), Moderate (II) or Difficult (III). Each activity can be substituted by various others of the same duration. Some excursions require pre-booking and additional payments. Each traveler can arrange, with the Inkaterra Explorer Guides, an individual schedule upon arrival. Schedules may change without prior notice according to weather conditions.

All excursions are guided by one of our trained professional Inkaterra Explorer Guides in Spanish or English (other languages available upon request, and may be subject to additional charge). Their knowledge and interpretive skills combine to provide understanding, insight and an enhanced experience of the surrounding environment.

IN-HOUSE INCLUDED EXCURSIONS

NATURE WALK

Walk along the hotel's trails, and discover the fascinating yet fragile ecosystem of the Machu Picchu cloud forest, and learn about its many indigenous plants and animals. The Nature Walk offers travelers a glimpse of cloud forest flora: ferns, bromeliads and orchids and fauna -an interesting variety of birds; as well as an introduction to the Vilcanota river system, the Observatory, the tea garden and house.

DURATION: ¼ day

DIFFICULTY LEVEL: I

ATTRACTIONS: Tea / Birds / Medicinal plants / Butterflies / Insects

RECOMMENDED FOR CHILDREN

ORCHID TRAIL

Walk through the orchid garden to observe some of the hotel's 372 different native orchid species in their natural habitat, the world record according to the American Orchid Society. Discover this extraordinary plant family, which has captured the human imagination for centuries. From the largest orchid flower in the world – the *Phragmipedium caudatum*, to tiny flowering specimens properly appreciated only through a magnifying glass, there are orchids to amaze both the newly inquisitive and the expert, including species new to science which have been discovered on the hotel grounds.

DURATION: ¼day

DIFFICULTY LEVEL: I

ATTRACTIONS: Orchids / Photography

RECOMMENDED FOR CHILDREN

TEA

Visit our organic tea (*Camellia sinensis*) plantation and tea house to discover the wonders of the traditional tea making process. Take part as the freshly picked leaves are pressed over wooden blocks and finally seal your own tea bag. A glass of fresh hot or iced-tea from the Tea House at the hotel lobby completes the experience.

DURATION: ¼ day

DIFFICULTY LEVEL: I

ATTRACTIONS: Tea / Medicinal Plants / Photography

RECOMMENDED FOR CHILDREN

BIRDS

Walk early in the morning to take advantage of the optimum time for cloud-forest bird watching. Begin at a river observatory, with the possibility of sighting the sought-after torrent duck and the white-capped dipper. Then proceed to a productive tanager feeding area, where silver-beaked, blue-necked, fawn-breasted and saffron-crowned tanagers can be found. Along the hotel's pathways, be on the lookout for the cock-of-the-rock, the golden-headed quetzal and many of the 18 different hummingbirds identified on the grounds, including the booted racket-tail and the green-and-white hummingbirds, which are native to the area.

DURATION: ¼ day

DIFFICULTY LEVEL: I

ATTRACTIONS: Birds / Photography

TWILIGHT WALK

This early evening walk is designed to connect on a spiritual level with the environment and the historical energy of the Machu Picchu area. With special attention placed on nature's core elements like an enchanting waterfall, also sacred pre-Inca pictographs, and then the walk pauses at the *Rocota* Observatory.

DURATION: ¼ day

DIFFICULTY LEVEL: II

ATTRACTIONS: Medicinal Plants / Photography

NATIVE FARM

Visit the crop-rich native farm at km 108, 30-minute walk. Interpretation of the flora and fauna of the area. Detailed explanation of the various plantations; origin, properties and uses. Learn about beekeeping as well as guinea pig and rabbit breeding.

Tasting of snacks made of farm products.

DURATION: ½ day

DIFFICULTY LEVEL: I

ATTRACTIONS: Birds / Insects / Medicinal plants / Native skills / Photography

RECOMMENDED FOR CHILDREN

ADDITIONAL EXCURSIONS (at extra charge)

SPECIALIZED WALK

A guide for three-hour walk along the hotel's Orchid or Bird trails, by our resident biologist, includes a personalized tour of our facilities and a detailed description of their natural highlights.

DURATION: 1/4 day

DIFFICULTY LEVEL: II

ATTRACTIONS: Birds or Orchids / Photography

MANDOR

A two-hour walk along the Vilcanota River follows the railroad tracks into the Mandor Valley, inhabited by varied and fascinating birdlife, including cock-of-the-rock, speckle-faced parrots and green jays. Relax and bathe under a secluded waterfall, before walking back to the hotel in the shadow of Machu Picchu.

DURATION: ½ day

DIFFICULTY LEVEL: II

ATTRACTIONS: Birds / Orchids / Insects / Photography

MACHU PICCHU

Take a 30-minute bus transfer to the Historical Reserve of Machu Picchu. Your expert guide will lead a tour of the Reserve, providing geological and historical information on key areas of interest, including *Intihuatana* (the Sun Dial), the Sacred Plaza and the Temple of the Sun. This is an opportunity to revel in the energy and atmosphere of one of the most significant and spectacular archaeological sites on the planet, surrounded by snow-capped peaks, *Wayna Picchu* and *Intipunku* (the Sun Gate), the entrance to the Machu Picchu Inca trail.

DURATION: 1/2 day

DIFFICULTY LEVEL: II

ATTRACTIONS: Archaeological sites / Market / Orchids / Language / Photography

RECOMMENDED FOR CHILDREN

MACCHU PICCHU AND WAYNA PICCHU

Visit the historical citadel of Machu Picchu with a private guide, followed by an hour-trek up Wayna Picchu. The steep trail, overlooking Machu Picchu, clings to the side of the mountain, leading the adventurous travelers to a remote corner of this archaeological site. In addition to a magnificent bird's-eye view of Machu Picchu, the summit also offers a perfect vantage from which to take in the Vilcanota River, the mountain of *Putukusi* and the distant snow-capped Andean peaks.

DURATION: 1 day

DIFFICULTY LEVEL: III

ATTRACTIONS: Archaeological Sites / Market / Language / Orchids / Photography

APU MACHU PICCHU

Hike the Machu Picchu Mountain for two-and-a-half hours from the archaeological site, and reach the summit of *Apu Machu Picchu*. This trail, accessed from the Reserve, joins parts of the Inca trail leading to the Sun Gate before climbing to the mountain's highest point. From there, enjoy the view of soaring eagles as well as Machu Picchu, other significant ruins in the area, *Putukusi*, *Wayna Picchu*, *Salkantay* mountain and the Vilcanota River.

DURATION: 1 day

DIFFICULTY LEVEL: III

ATTRACTIONS: Archaeological sites / Market / Orchids / Language / Photography

PUTUKUSI*

Climb up one of the most beautiful mountains in the Historical Sanctuary with a wonderful side view of the Inca Citadel from its summit. Walk from the hotel to the *Putukusi* Mountain, climb up 45 minutes, and continue to the top of the mountain for 45 minutes. Highlights include a viewpoint located roughly 500 meters (1,600 feet) above Machu Picchu Pueblo; the encrusted vertical wooden stairs in the rock (400 meters/1200 feet); and a panoramic view of the Vilcanota River, Machu Picchu village, Mandor valley, *Intipunku*, *Wayna Picchu* mountain, and a lateral view of the Inca Citadel.

DURATION: 1/2 day

DIFFICULTY LEVEL: III

ATTRACTIVEIONS: Birds / Butterflies / Orchids / Archaeological Sites / Photography

*Not available until further notice.

MUSEUM-MARKET

Visit the open-air market at Machu Picchu Pueblo, filled with displays of local Andean curios and clothing, then make the 30-minute walk to the archaeological site bridge and the Manuel Chavez Ballón Museum, home to excellent displays, maps and artifacts related to the archaeological site.

DURATION: 1/2 day

DIFFICULTY LEVEL: I

ATTRACTIVEIONS: Market / Photography

RECOMMENDED FOR CHILDREN

WILDLIFE OBSERVATION

MAMMALS

Spectacled Bear - in captivity (*Tremarctos ornatus*)

BIRDS

Andean Cock-of-the-rock (*Rupicola peruviana*)

Highland Mot-mot (*Momotus aequatorialis*)

Golden-headed Quetzal (*Pharomachrus auriceps*)

Blue-Gray Tanager (*Thraupis episcopus*)

Torrent Duck (*Merganetta armata*)

HUMMINGBIRDS

Booted Racket-tail (*Ocreatus underwoodii*)

Shining Sunbeam (*Aglaeactis cupripennis*)

Chestnut-breasted Coronet (*Boissonneaua matthewsii*)

Amethyst-throated Sunangel (*Heliangelus amethysticollis*)

Sparkling Violetear (*Colibri coruscans*)

White-bellied Hummingbird (*Leucippus chionogaster*)

Green-and-white Hummingbird (*Leucippus viridicauda*)

Collared-Gould's Inca (*Coeligena inca*)



RATES PER GUEST PER NIGHT IN AMERICAN DOLLARS AND SOLES

CASITAS (85)	SINGLE	DOUBLE
	USD - PEN	USD - PEN
Superior (45)	504 - 1,614	319 - 1,020
Superior Deluxe (19)	566 - 1,810	350 - 1,120
Junior Suite (8)	627 - 2,007	381 - 1,219
Junior Suite Deluxe (7)	753 - 2,408	488 - 1,561
Suite (4)	950 - 3,039	603 - 1,929
Inkaterra Suite (2)	1,082 - 3,461	680 - 2,177
Additional bed	197 - 631	

VILLA (2)	USD - PEN
2 guests	1,080 - 3,457
3 guests	813 - 2,601
4 guests	675 - 2,159

INCLUDED

- 10% service charge
- Local Tax (18% VAT) applicable to Peruvians and foreign residents in Peru
- Assistance between Machu Picchu train station and the hotel
- Overnight at Inkaterra Machu Picchu Pueblo Hotel
- 1 Buffet breakfast
- 1 à-la-carte dinner
- Guided excursions within the property (Birds - Nature - Orchid - Tea - Twilight)

NOT INCLUDED

- Compulsory supplement of US\$ 99.00 per person on the nights of December 24th and 31st.

ADDED VALUE

- Welcome Drink
- Welcome gift
- Tea time
- Cocktail Hour

NOTES

- Check-in 1:00 p.m. / Check-out 11:00 a.m.
- Additional beds: limited capacity, maximum one per *casita*
- Children under 12: maximum two per *casita* when sharing it with one or two adults. Do not apply to stays at Inkaterra Villas

- Children over 12: must take the additional bed rate - maximum one per *casita*
- Additional and private services available at an extra cost
- Rates subject to change without prior notice

NOTE:

EXPORT SERVICES (DL No. 919) Regarding the General Tax Sales (IGV), Peruvian law considers accommodation to non-resident guests as export service. In order to be exempted and as a requirement, all non-resident guests must present upon check in their original passport and Andean Immigration Card - provided at your arrival to the country and with no more than 60 days after the arrival date indicated at the Andean immigration card.

YOUR CHILDREN ARE OUR GUESTS

CHILDREN UNDER 12 STAY FOR FREE AT INKATERRA MACHU PICCHU PUEBLO HOTEL

Booking Terms: Valid for reservations with stays between January 1st to December 31st, 2015. Do not apply to stays at Inkaterra Villas. Only for children under 12. Maximum two children per *casita* when sharing it with one or two adults. Children over 12 must take the additional bed rate. Condition subject to change without prior notice. Limited availability. We highly recommend travel insurance.

BE OUR GUEST ON THE 3RD NIGHT

BOOK 2 NIGHTS AT INKATERRA MACHU PICCHU PUEBLO HOTEL AND RECEIVE A THIRD FOR FREE

Booking Terms: Valid for reservation with stays between January 1st to December 31st, 2015. Limited availability. Non valid with other promotions. Non refundable. Change of date or name not allowed. Non transferable. Condition subject to change without prior notice. We highly recommend travel insurance.

INKATERRA
AUTHENTIC NATURE TRAVEL IN PERU
SINCE 1975

OFICINA LIMA:
T.+51 1 610 0404 / F.+51 1 422 4701
Andalucía 174 Miraflores - Lima 18 - Peru
central@inkaterra.com

OFICINA CUSCO:
T. 0-801-00400
Córdova de Tucumán 340, Cusco - Peru
ventas_cusco@inkaterra.com

USA & CANADA 1 800 442 5042
UK 0 800 458 7506
SPAIN 900 878 172
sales@inkaterra.com

29 Ene 2015

www.inkaterra.com

Andalucía 174
Lima 18 - Perú

T. (51 1) 610 0400
F. (51 1) 422 4701

www.inkaterra.com